



Computer visual showing Site 48

The ARDARA

Type 7



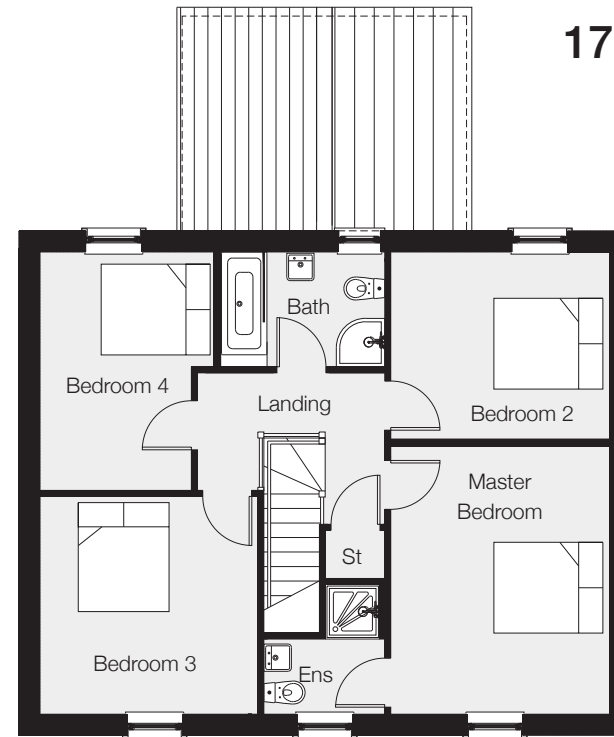
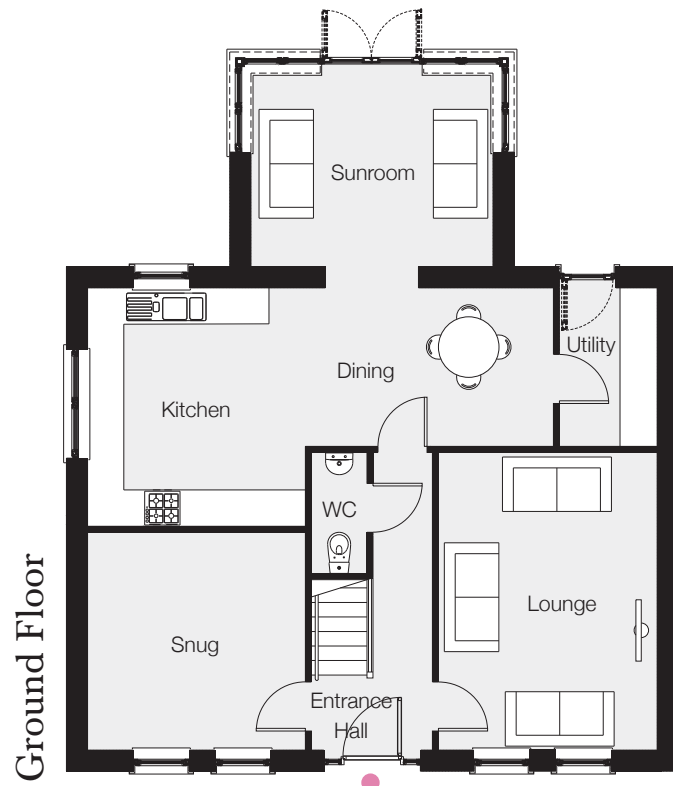
ROSEMOUNT
HOMES

Type 7

The ARDARA

Total Floor Area

1700 sq ft approx



Ground Floor

Entrance Hall	
Lounge	16'2" x 11'10"
Snug	11'10" x 11'10"
Kitchen	12'11" x 11'10"
Dining	13'5" x 8'7"
Utility Room	8'7" x 5'4"
Sunroom	13'1" x 10'6"
WC	

First Floor

Master Bedroom	14'7" x 11'11"
Ensuite <i>min</i>	6'7" x 4'0"
Bedroom 2	11'11" x 10'3"
Bedroom 3	11'10" x 11'10"
Bedroom 4 <i>max</i>	12'11" x 9'6"
Bathroom	9'0" x 6'3"



ROSEMOUNT
HOMES

www.rosemounthomes.com

In compliance with Consumer Protection from Unfair Trading and Business Protection from Misleading Marketing Regulations, please note that any visual or pictorial representations as featured on this insert such as 3D computer generated images are purely intended as a guide for illustrative, concept purposes only and often may be subject to change. Any floor plans and site layouts used are not to scale and all dimensions are approximate and subject to change. Also note this insert does not feature exact location or presence of specific or detailed items such as street lighting, sub stations or full finishes etc. All specific details to your chosen plot or immediate boundaries etc. should be checked with the agent, developer, or your legal advisor prior to purchase.